



Feature

- 1.Low-profile.
- 2.Dual-unit type offer superior gang error characteristics.
- 3.Dip and reflow solderable.

10mm Thumbwheel driving potentiometer

Electrical characteristics

- Total Resistance.....1K Ω ~1M Ω
- Total Resistance Tolerance.....500 Ω < R < 1M Ω : $\pm 20\%$
R \leq 500 Ω or R \geq 1M Ω : $\pm 30\%$
- Resistance Taper.....A,B,C
- Rated Power.....Linear Taper B:0.05W
Other Tapers:0.025W
- Rotational Noise.....Less than 100mV
- Residual Resistance.....Term.1~2:Less than 20 Ω
Term.2~3:Less than 20 Ω
- Withstand Voltage.....1 minute at AC 100V
- Insulation Resistance.....More than 100M Ω at DC 100V
- Gang Error (Dual Unit).....-40dB~0dB ± 3 dB

Mechanical characteristics

- Total Rotational Angle.....270° $\pm 5^\circ$
- Rotational Torque.....10gf.cm~90gf.cm
- Stopper Strength.....0.8Kgf.cm Min.
- Push-Pull Strength.....Push:0.5Kgf. Min ; Pull:0.2Kgf Min

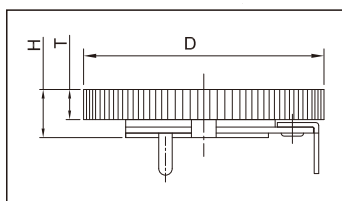
Durability

- Rotational Life.....10,000 Cycles
- Operating Temperature Range.....-10°C ~ +70°C

HOW TO ORDER

F1001-		N	N	1	B1	B	100K	1
Model Series		Knob Dimension		See Note1		Total Resistance		
Code	Gang Option	Code	Knob Material & Color		1K			
N	Single Gang	B1	Glossy Black		2K			
G	Dual Gangs	B4	Dull Polish Black		5K			
T	Dual Gangs with Shared 3rd Terminal	B7	Black (for SMD)		10K			
Code		Resistance Taper		20K				
Terminal Configuration (See Note 2)		A	Audio (15A)		50K			
N	Horizontal Fixing, PC Pins	B	Linear (Single Unit : 1B ; Dual Gangs : 3B)		100K			
P	Vertical Fixing, PC Pins	C	Reverse Audio(15C)		200K			
		D	Audio (10A)		500K			
				1MEG				

Note 1: Knob dimension



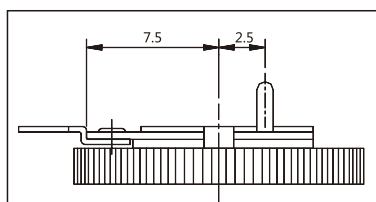
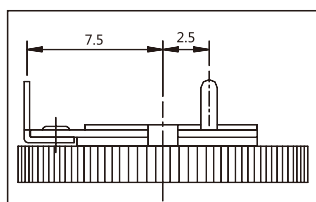
Code	Operation Life
(Blank)	Std. Life w/o anti-sulfur
1	Std. Life w/ anti-sulfur

Code	1	2	3	4	5	6	7	8	9	0
D	14	14	14	16	16	16	18	18	20	20
T	1.0	2.0	2.8	2.0	2.65	2.8	2.0	2.8	2.0	2.8
H	2.4	3.4	4.2	3.4	4.1	4.2	3.4	4.2	3.4	4.2

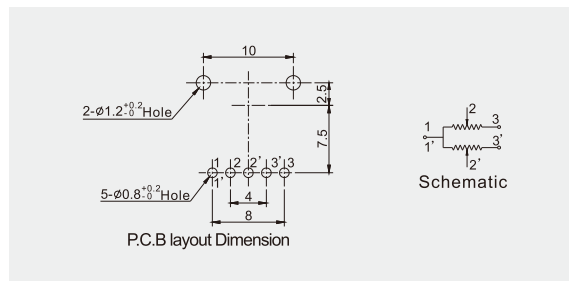
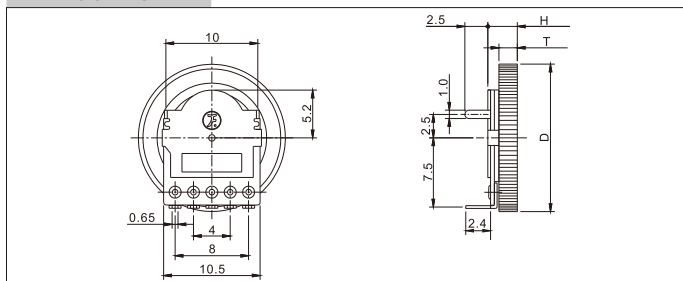
Note 2: Terminal Configuration

N: Top Adjust, PC Pins

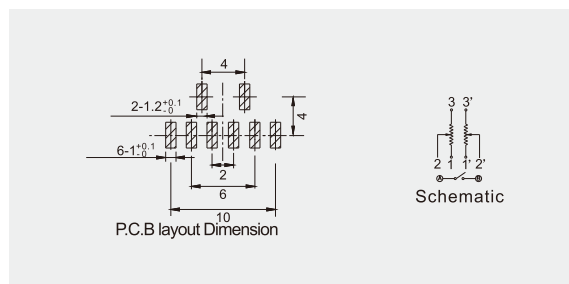
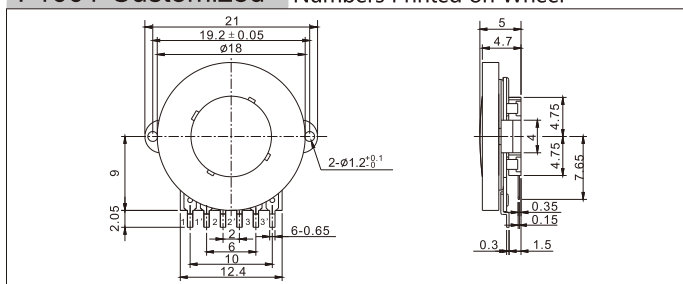
P: Side Adjust, PC Pins



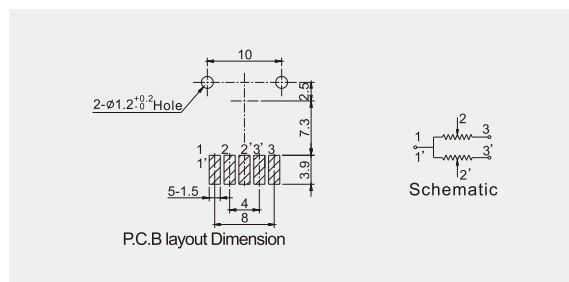
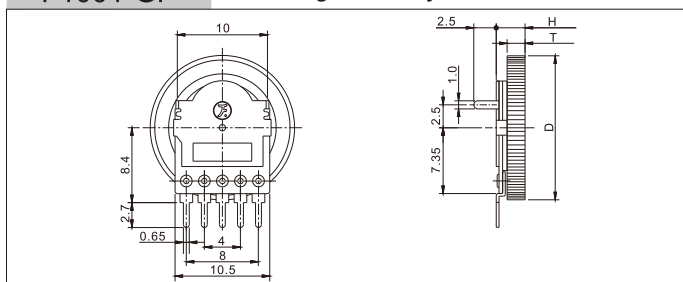
F1001-GN Dual Gangs, Top Adjust, PC Pins



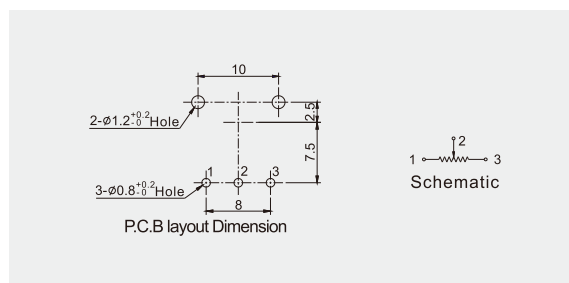
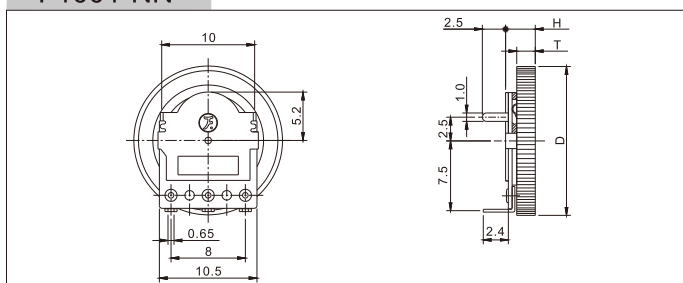
F1001-Customized Dual Gangs, SMD Pins, with Customized Numbers Printed on Wheel



F1001-GP Dual Gangs, Side Adjust, PC Pins



F1001-NN 1 Gang, Top Adjust, PC Pins



F1001-NP 1 Gang, Side Adjust, PC Pins

