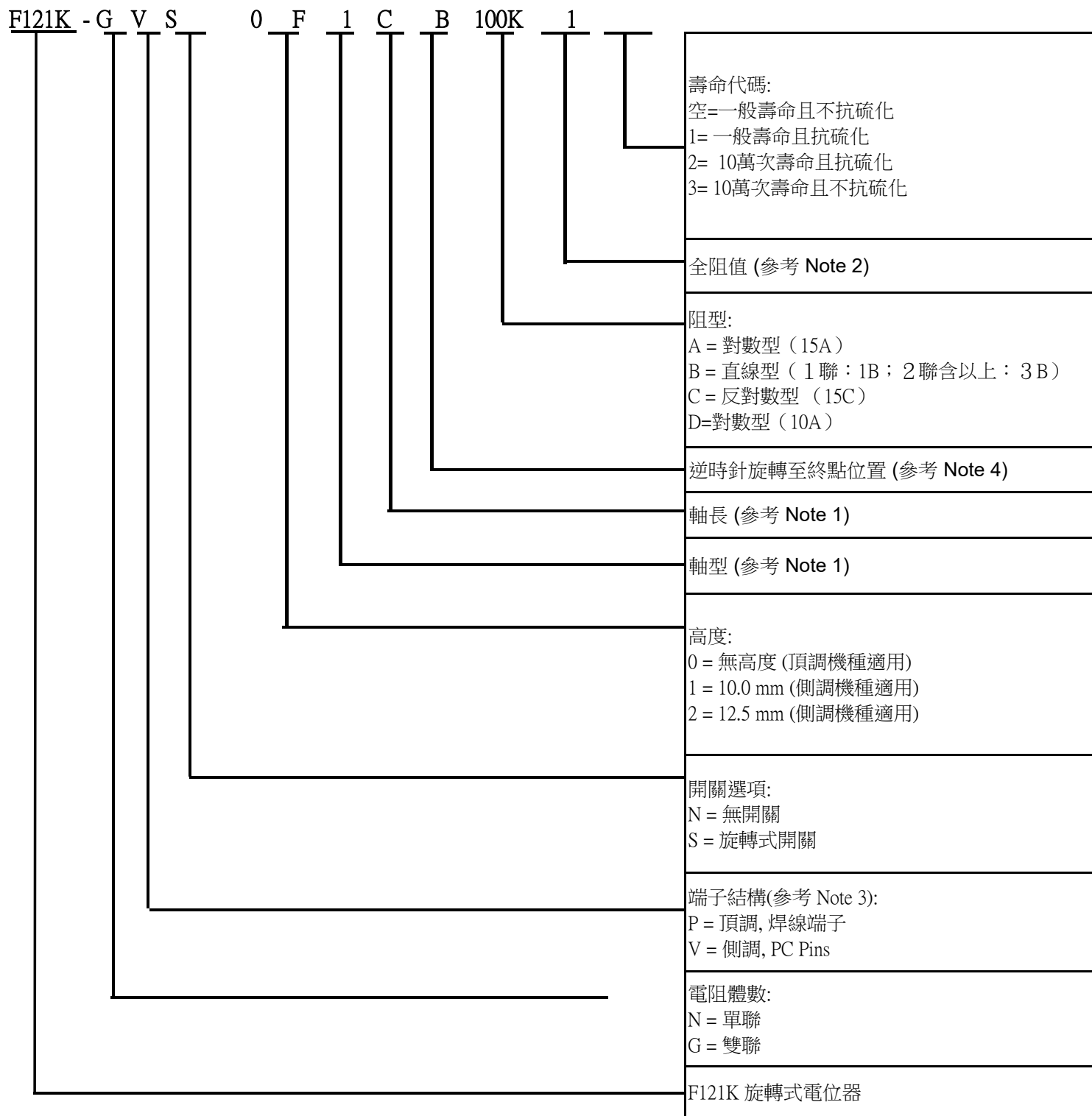


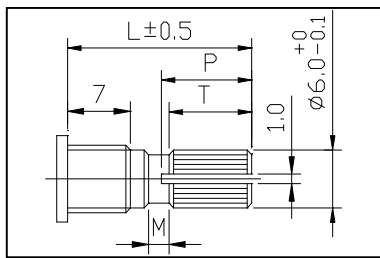
# 旋轉式電位器命名原則



## Note 1: 軸型與軸長

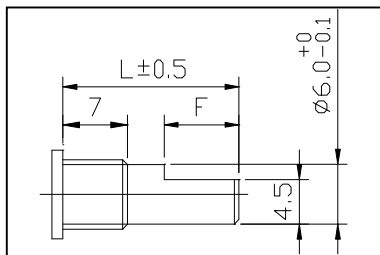
車制軸心：

### Q-Type



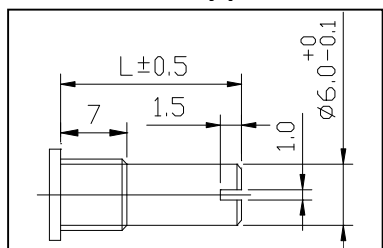
代碼	1	2	3	4	5
L	15	20	25	30	35
P	6.5	11.5	14	14	14
T	5.5	10	12	12	12
M	1	1.5	2.5	4	4

### F-Type



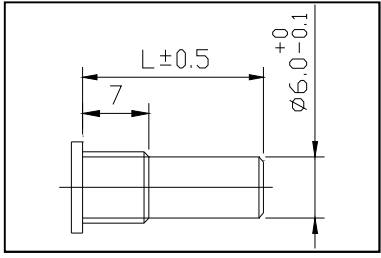
代碼	1	2	3	4	5	6
L	13	20	25	30	35	15
F	5	12	12	12	12	7

### S-Type



代碼	1	2	3	4	5
L	15	20	25	30	35

### R-Type



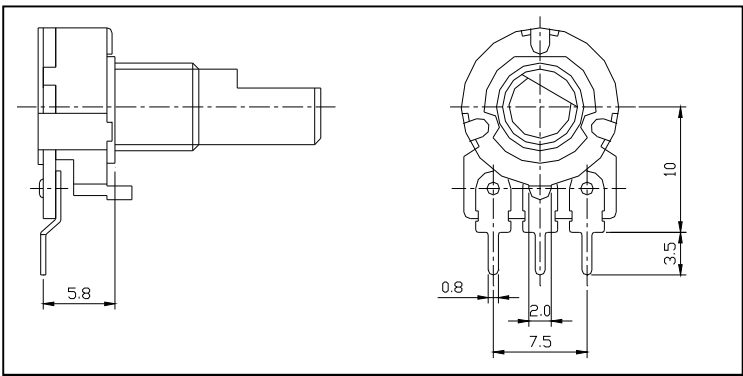
代碼	1	2	3	4	5
L	15	20	25	30	35

### Note 2: 標準全阻值

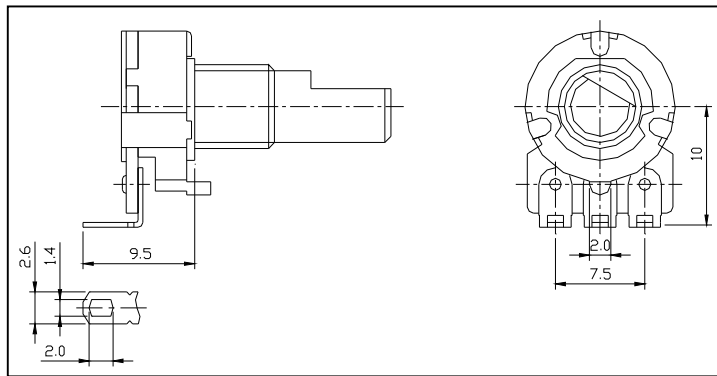
1K	2K	5K	10K	20K	50K	100K	200K	500K	1MEG
----	----	----	-----	-----	-----	------	------	------	------

### Note 3: 端子結構

#### V-TYPE

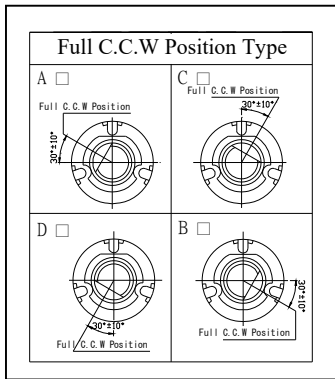


#### P-TYPE

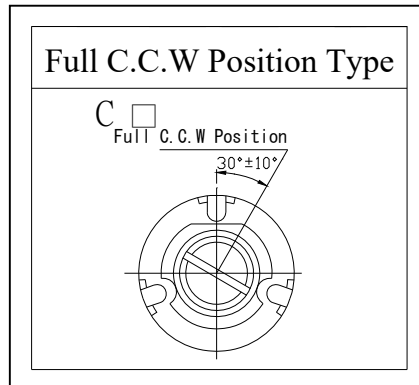


### Note 4: 逆時針全旋轉位置

#### F-type shaft



#### Q/S -type shaft



#### R -type shaft

