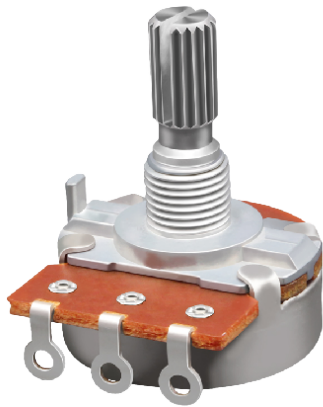


F24KM Series Metal Shaft Potentiometer



Feature:

1. Exceptionally Long Lifespan
2. Smooth Rotation
3. Stable Performance
4. Metal Shaft

Application:

- Cold Welding Machine
- Water Heater

Mechanical Characteristics

Total Rotational Angle	300° ±10°
Rotational Torque	20~150 gf.cm
Rotation Stopper Strength	Minimum 5.0 Kgf.cm

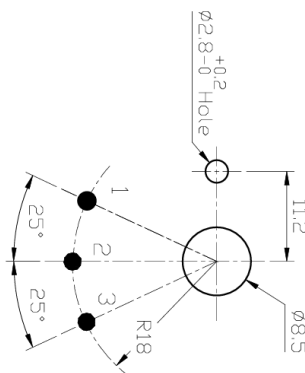
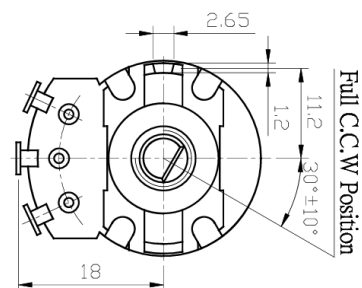
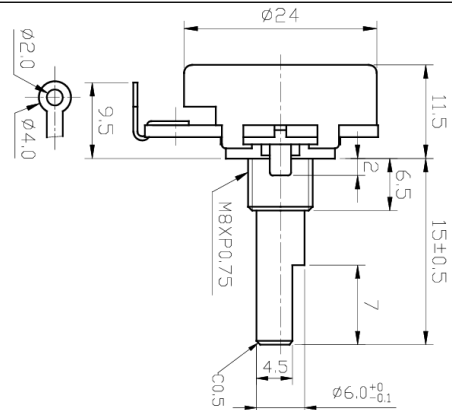
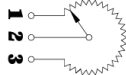
Endurance Characteristics

Rotational Life	15,000 cycles
-----------------	---------------

Electrical Characteristics

Total Resistance	1KΩ ± 20%
Rated Power	0.5 W
Rated Voltage	AC 500V
Sliding Noise	Less than 100 mV

CIRCUIT



未指定容許 ± 尺寸之公差	±0.3
10以下	±0.5
10~100	±0.8
100以上	±5°
角度	±5°