

### Feature

1. Dust proof construction protects the interior from dust, which maintains stable characteristics.
2. Compliant to reflow high peak temperature lead free soldering
3. Excellent resistance materials and high reliability wiper achieves 1,000,000 cycles.
4. Ultra-thin size. (2.2mm height)

### Typical Applications

- Animal Robot Joint Controller
- HAVC Sensor
- Motor Drive Unit
- Electric Motor-Driven Bicycle
- Rotary Angle Sensor

### FSE11 Series Position Sensor

#### Electrical characteristics

- Resistance Range.....1K~100K
- Total Resistance Tolerance.....±20%
- Taper Style.....B taper
- Power Rated.....0.1W
- Linearity ..... Angle<180°: ±5%  
180° ≤ Angle < 300°: ±3%  
300° ≤ Angle: ±2%
- Rotational Noise ..... Less than 80mv
- T.C.R..... ±500ppm/°C

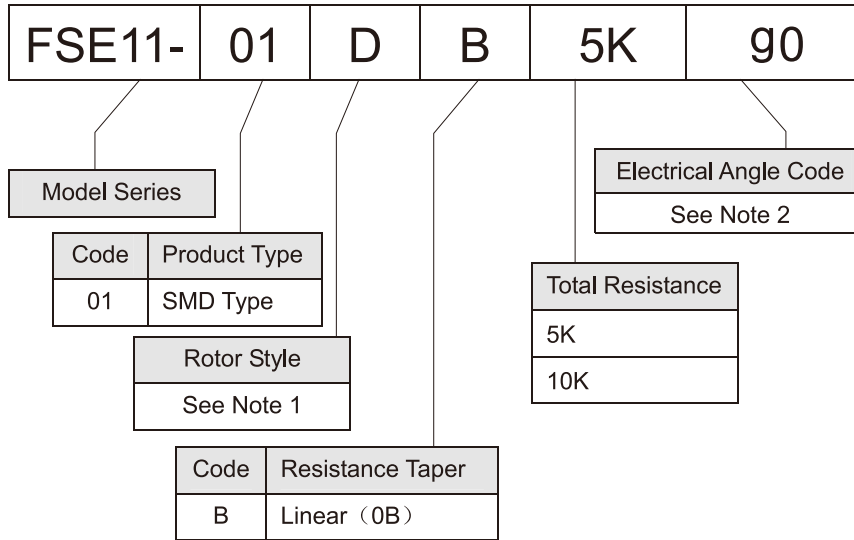
#### Mechanical characteristics

- Effective electrical Angle .....333±3°
- Rotational Torque.....5~30gf.cm
- Push-pull Strength of Shaft.....Over1.0kgf for 10 seconds min
- Total Rotational Angle .....360° (Endless)

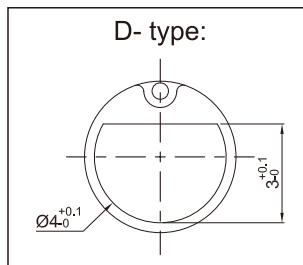
#### Environmental characteristics

- Storage Temperature.....-40°C to +120°C
- Operating Temperature.....-40°C to +70°C
- Life Cycles.....1,000,000 Cycles Min
- Dry Heat..... 120±3°C, 250±8H  
ΔTR: ±20%, Linearity: ±2%
- Cold..... -40±3°C, 168±4H  
ΔTR: ±20%, Linearity: ±2%
- Humidity.....60±2°C, 90~95RH, 250±8H  
ΔTR: ±20%, Linearity: ±2%
- Temperature Cycles.....-40°C~+120°C, 5cycles  
ΔTR: ±20%, Linearity: ±2%

### HOW TO ORDER



#### Note 1: Rotor style



#### Note 2: Code of Electrical Angle

Code	D0	F0	F5	G0	J0	L5	P0	W0	b0	g0	h3	r1
Angle	60°	80°	85°	90°	120°	145°	180°	250°	300°	320°	333°	341°
Linearity	±5%						±3%			±2%		

#### FSE11-01D

SMD Type with D Type Rotor

