

Feature

1. Compliant to reflow high peak temperature lead free soldering
2. Excellent resistance materials and high reliability wiper achieves 1,000,000 cycles.
3. Ultra-thin size. (2.2mm height)

Typical Applications

- Animal Robot Joint Controller
- HAVC Sensor
- Motor Drive Unit
- Electric Motor-Driven Bicycle
- Rotary Angle Sensor

FSE11 Series Position Sensor

Electrical characteristics

- Resistance Range.....1K~100K
- Total Resistance Tolerance.....±20%
- Taper Style.....B taper
- Power Rated.....0.1W
- Linearity Angle<180°: ±5%
180° ≤ Angle < 300°: ±3%
300° ≤ Angle: ±2%
- Rotational Noise Less than 80mv
- T.C.R..... ±500ppm/°C

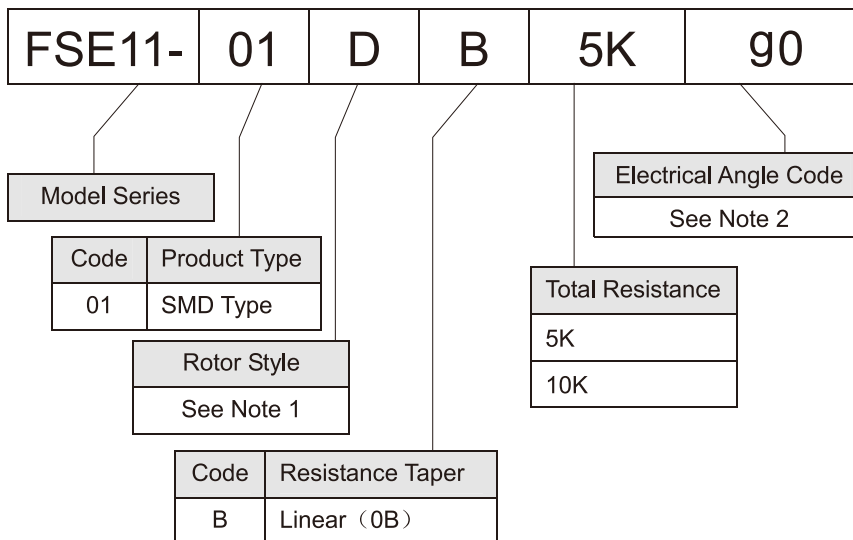
Mechanical characteristics

- Effective electrical Angle333±3°
- Rotational Torque.....5~30gf.cm
- Push-pull Strength of Shaft.....Over1.0kgf for 10 seconds min
- Total Rotational Angle360° (Endless)

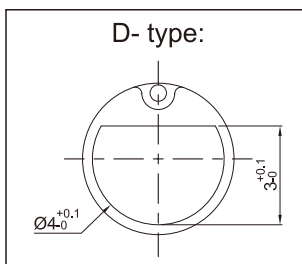
Environmental characteristics

- Storage Temperature.....-40°C to +120°C
- Operating Temperature.....-40°C to +70°C
- Life Cycles.....1,000,000 Cycles Min
- Dry Heat..... 120 ± 3°C, 250 ± 8H
ΔTR: ± 20%, Linearity: ± 2%
- Cold..... -40 ± 3°C, 168 ± 4H
ΔTR: ± 20%, Linearity: ± 2%
- Humidity.....60 ± 2°C, 90~95RH, 250 ± 8H
ΔTR: ± 20%, Linearity: ± 2%
- Temperature Cycles.....-40°C~+120°C, 5cycles
ΔTR: ± 20%, Linearity: ± 2%

HOW TO ORDER



Note 1: Rotor style



Note 2: Code of Electrical Angle

Code	D0	F0	F5	G0	J0	L5	P0	W0	b0	g0	h3	r1
Angle	60°	80°	85°	90°	120°	145°	180°	250°	300°	320°	333°	341°
Linearity	±5%						±3%			±2%		

FSE11-01D

SMD Type with D Type Rotor

