

Feature

1. Metal housing. 2.Center detent option.
- 3.Plastic slide rod type. 4.Long Life Type Available.

Fxx05 Slide Potentiometer

Electrical characteristics

- Total Resistance.....1K Ω ~1M Ω
- Total Resistance Tolerance.....500 Ω <R<1M Ω : \pm 20%
R \leq 500 Ω or R \geq 1M Ω : \pm 30%
- Resistance Taper.....A,B,C
- Withstand Voltage.....1 minute at AC 300V
- Insulated Resistance.....More than 10M Ω at DC 250V
- Sliding Noise.....Less than 100mV
- Residual Resistance.....20mm:
Term.1~2(2'~3'): Less than 10 Ω
Term.2~3(1'~2'): Less than 20 Ω
30mm:
Term.1~2(2'~3'): Less than 10 Ω
Term.2~3(1'~2'): Less than 30 Ω
- Gang Error (Dual Unit).....- 40dB~0dB \pm 3dB
- Rated VoltageLinear Taper B:15mm:AC 100V
20mm,30mm,45mm,60mm:AC 200V
Other Tapers:15mm:AC 50V
20mm,30mm,45mm,60mm:AC 150V
- Rated Power (Single Unit / Dual Unit).....Linear Taper B:15mm:0.05W/0.025W,20mm:0.1W/0.05W,
30mm:0.2W/0.1W,45mm:0.25W/0.125W,
60mm:0.2W/0.2W
Other Tapers:15mm:0.025W/0.012W,20mm:0.05W/0.025W
30mm:0.1W/0.05W,45mm:0.125W/0.06W,
60mm:0.1W/0.1W

Mechanical characteristics

- Slide Torque.....10gf~100gf
- Stopper Strength.....5.0Kgf.cm Min
(from the base level to a point of 2 mm)
- Detent Torque(Only Center Click)50gf~200gf
- Level Wobble.....2(2xL)/20mm Max.(L:Level length both sides)
- Level Push-Pull Strength.....3.0Kgf Min at 10Sec.

Durability

- Sliding Life.....Standard life: 15,000 Cycles Min.
Long life: 100,000 Cycles Min.
- Operating Temperature Range.....-10 $^{\circ}$ C ~ +70 $^{\circ}$ C

HOW TO ORDER

Fxx05-	N	0	D	C	1	C	100K	1
--------	---	---	---	---	---	---	------	---

Model Series	
xx	Slide Travel (See Note 2)
15	15mm
20	20mm
30	30mm
45	45mm
60	60mm

Code	Detent
0	No Detent
1	Center Detent

Code	Gang Option
N	Single Unit
G	Dual Gangs

Slide Lever Type&Length	
See Note 1	

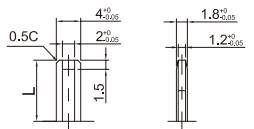
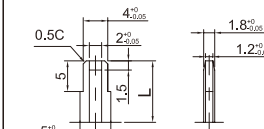
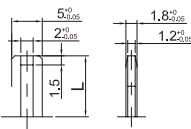
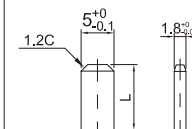
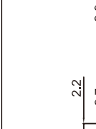
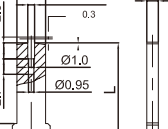
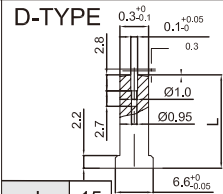

Code	Resistance Taper
A	Audio (15A)
B	Linear: (Single Unit:1B; Dual Gangs:3B)
C	Reverse Audio(15C)
D	Audio (10A)

Total Resistance
1K
2K
5K
10K
20K
50K
100K
200K
500K
1MEG

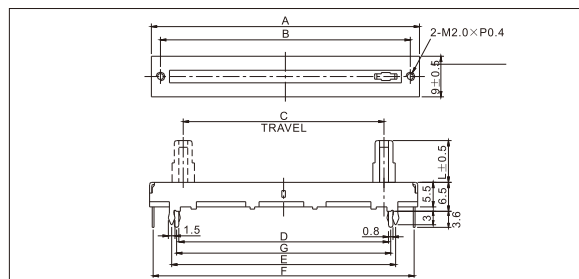
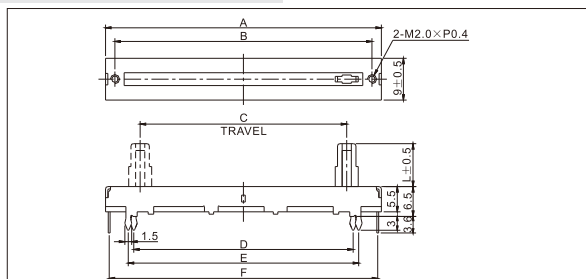
Code	Dustproof Option
S	No Dustproof Cover
D	with Plastic Dustproof
R	with Nonwoven Dustproof

Code	Operation Life
(Blank)	Std. Life w/o anti-sulfur
1	Std. Life w/ anti-sulfur
2	Long Life w/ anti-sulfur
3	Long Life w/o anti-sulfur

Note 1: Slide Lever Type and Length:

C-TYPE		A-TYPE		B-TYPE		D-TYPE	
							
L 5	L 10 12.5 15 18 20	L 5 8 10	L 5 10	L 15	L 15	L 15	L 15
CODE 1	CODE 2 3 4 5 6	CODE 1 2 3	CODE 1 2	CODE 1	CODE 1	CODE 1	CODE 1

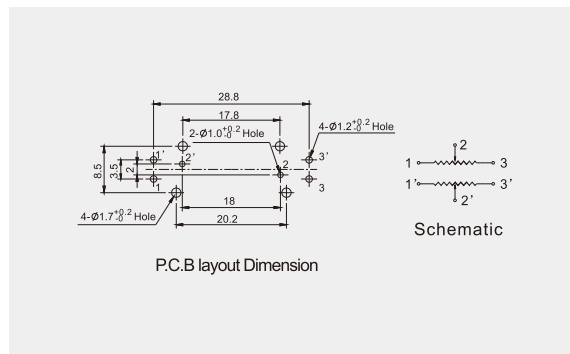
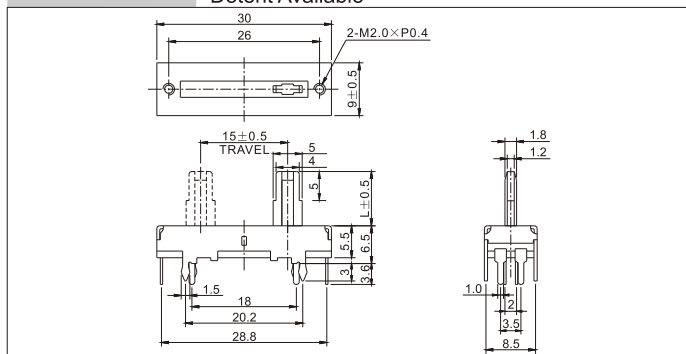
Note 2: Dimension



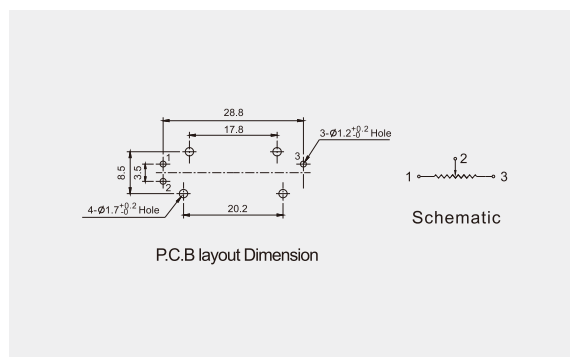
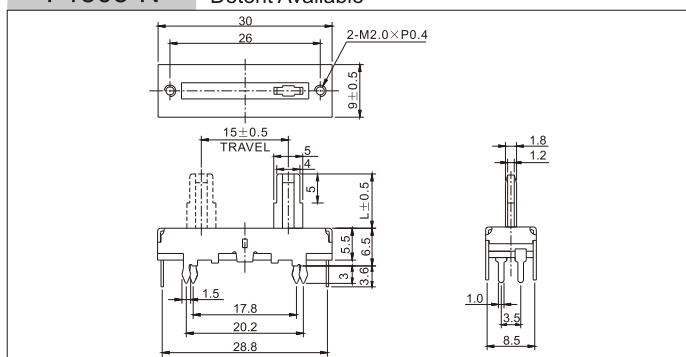
MODEL	A	B	C	D	E	F
F1505-N	30	26	15	17.8	20.2	28.8
F2005-N	35	31	20	22.8	25.2	33.8
F3005-N	45	41	30	32.8	35.2	43.8
F4505-N	60	56	45	47.8	50.2	58.8
F6005-N	75	71	60	62.8	65.2	73.8

MODEL	A	B	C	D	E	F	G
F1505-G	30	26	15	17.8	20.2	28.8	18
F2005-G	35	31	20	22.8	25.2	33.8	23
F3005-G	45	41	30	32.8	35.2	43.8	33
F4505-G	60	56	45	47.8	50.2	58.8	48
F6005-G	75	71	60	62.8	65.2	73.8	63

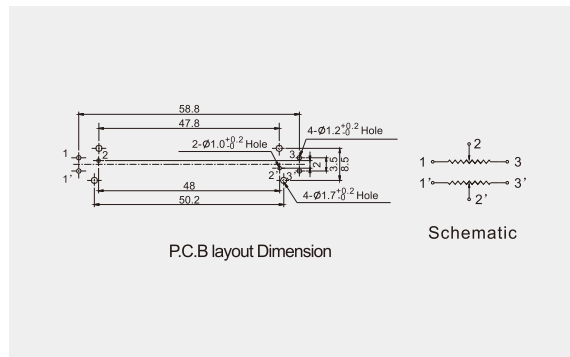
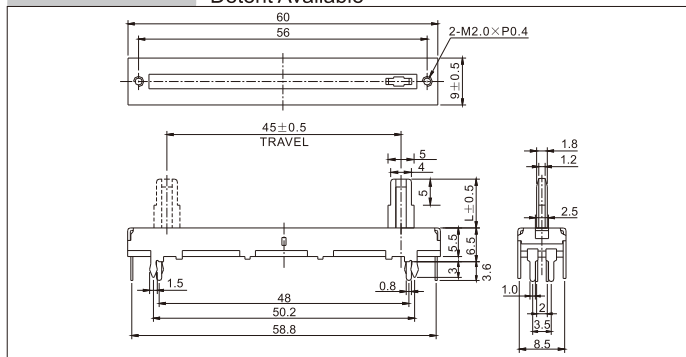
F1505-G 15mm Travel, Standard Type, 2 Gangs, Center Detent Available



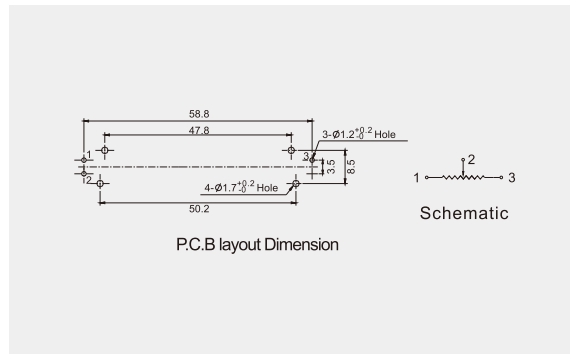
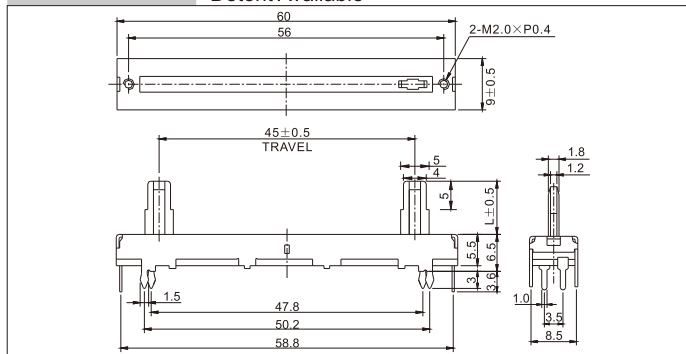
F1505-N 15mm Travel, Standard Type, 1 Gang, Center Detent Available



F4505-G 45mm Travel, Standard Type, 2 Gangs, Center Detent Available



F4505-N 45mm Travel, Standard Type, 1 Gang, Center Detent Available



Slide Potentiometer