

Feature

1. Metal housing. 2. Dust cover option.
3. Available in red, green and yellow LED colors.
4. Center detent option. 5. Long Life Type Available.

Fxx45 Slide potentiometer

Electrical characteristics

- Total Resistance.....1K Ω ~1M Ω
- Total Resistance Tolerance..... 500 Ω <R<1M Ω : \pm 20%
R \leq 500 Ω or R \geq 1M Ω : \pm 30%
- Resistance Taper.....A,B,C
- Withstand Voltage.....1 minute at AC 300V
- Insulated Resistance.....More than 100M Ω at DC 250V
- Sliding Noise.....Less than 100mV
- Residual Resistance..... 20mm:
Term.1~2: Less than 10 Ω
Term.2~3: Less than 20 Ω
30mm,45mm,60mm:
Term.1~2: Less than 10 Ω
Term.2~3: Less than 30 Ω
- Gang Error (Dual Unit).....- 40dB~0dB \pm 3dB
- Rated Voltage..... Linear Taper B:15mm:AC 100V
20mm,30mm,45mm,60mm:AC 200V
Other Tapers:15mm:AC 50V
20mm,30mm,45mm,60mm:AC150V
- Rated Power(Single Unit/Dual gangs)
Linear Taper B.....15mm,0.05W/0.025W,20mm:0.1W/0.05W,
30mm:0.2W/0.1W,45mm:0.25W/0.125W,
60mm:0.2W/0.2W
Other Tapers.....15mm,0.025W/0.012W,20mm:0.05W/0.025W,
30mm:0.1W/0.05W,45mm:0.125W/0.06W,
60mm:0.1W/0.1W

Mechanical characteristics

- Level Push - Pull Strength3.0Kgf Min at 10Sec.
- Slide Torque.....10gf~100gf
- Stopper Strength..... 5.0Kgf Min
(from the base level to a point of 2mm)
- Detent Torque(only center click).....50gf~200gf
- Level Wobble..... 2(2xL)/20mm Max.(L:Level length both sides)

Durability

- Slide Life..... Standard life: 15,000 Cycles Min.
Long life: 100,000 Cycles Min.
- Operating Temperature Range.....-10 $^{\circ}$ C ~ +70 $^{\circ}$ C

HOW TO ORDER

Fxx45- E R N 1 S P D 1 B 100K 1

Code	Gang and LED Option
N	Single Unit without LED
G	Dual Units without LED
E	Single Unit with LED

Code	Frame option
N	No Frame
F	With Frame

Code	Detent
0	No Detent
1	Center Detent

Slide Lever Type& Length	
See Note 1	

Code	Slide Lever Material
P	Plastic Slide Lever
M	Metal Slide Lever

Total Resistance	
1K	
2K	
5K	
10K	
20K	
50K	
100K	
200K	
500K	
1MEG	

Model Series	
xx	Slide Travel
20	20mm
25	25mm
30	30mm
45	45mm
60	60mm

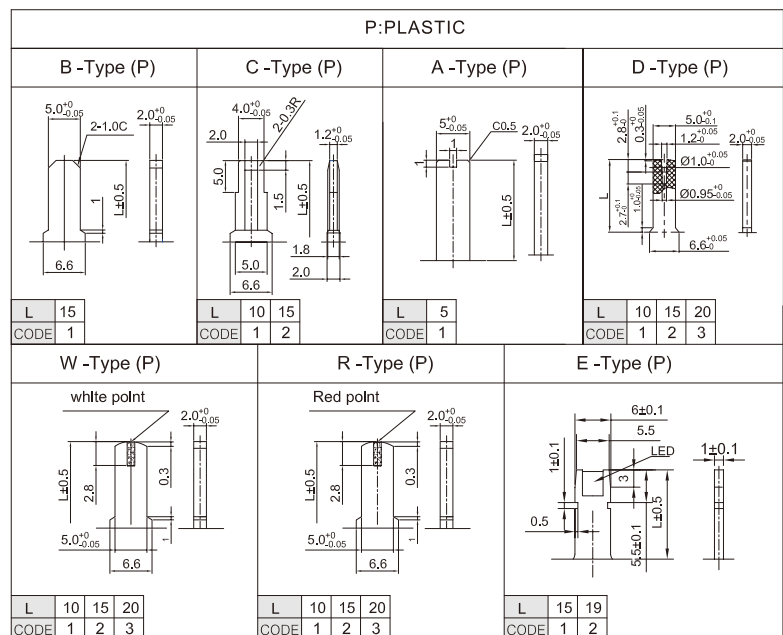
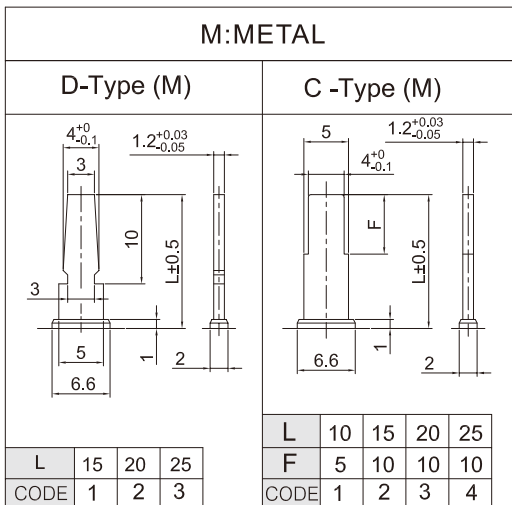
Code	Color of LED
N	No LED
R	Red
Y	Yellow
G	Green
W	White

Only Availly with Single Unit Slider

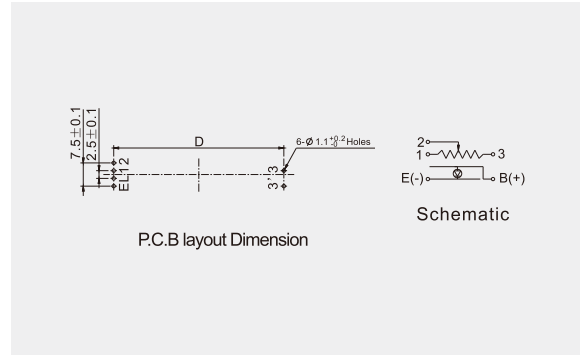
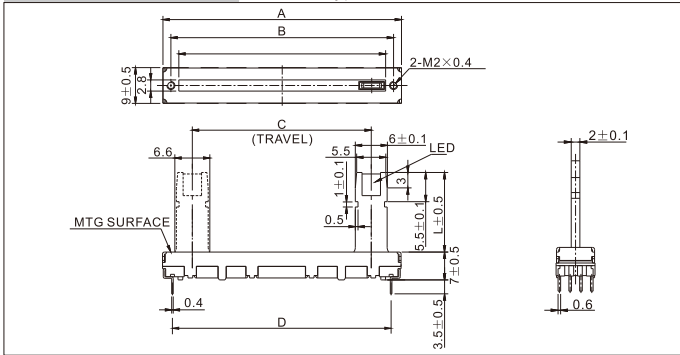
Code	Dustproof Option
S	No Dustproof Cover
D	with Plastic Dustproof
R	with Nonwoven Dustproof

Code	Operation Life
(Blank)	Std. Life w/o anti-sulfur
1	Std. Life w/ anti-sulfur
2	Long Life w/ anti-sulfur
3	Long Life w/o anti-sulfur

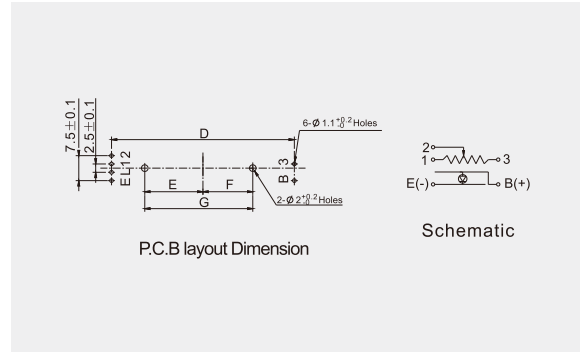
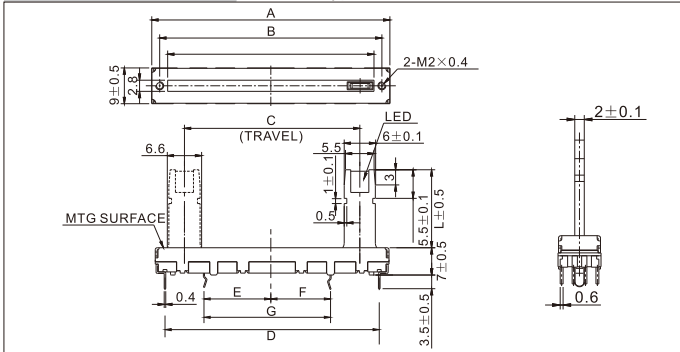
Note 1: Slide Lever Type and Length:



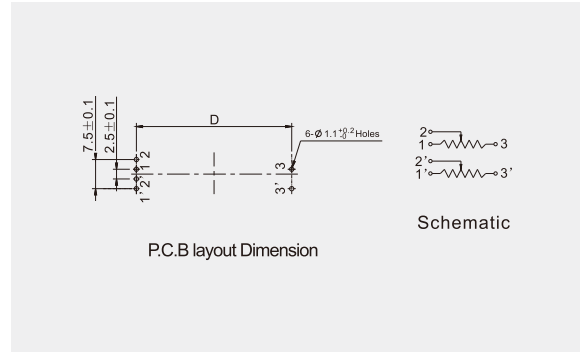
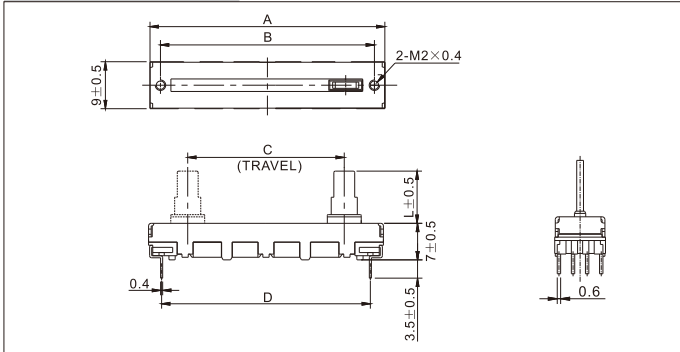
Fxx45-ERN □ □ PF 20/25/30/45/60mm Travel with Red LED, no Frame, Plastic F-Type Slide Rod, Center Detent Available



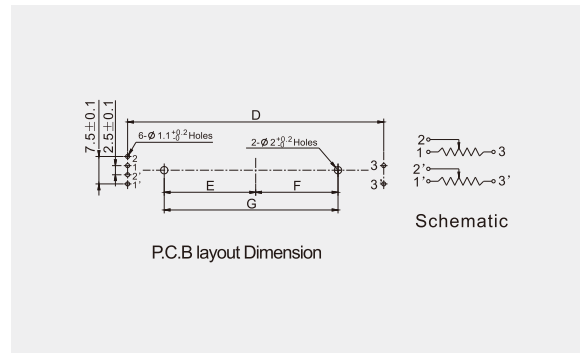
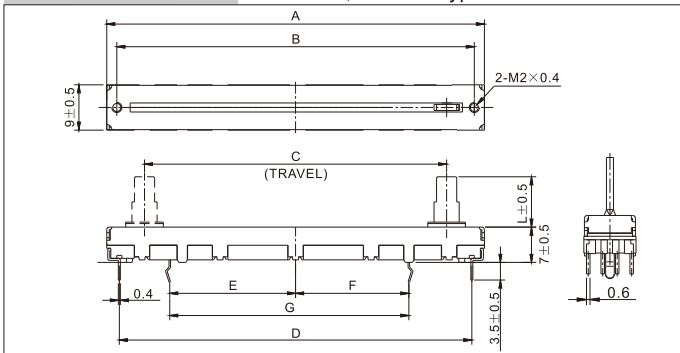
Fxx45-ERF □ □ PF 20/25/30/45/60mm Travel with Red LED, with Frame, Plastic F-Type Slide Rod, Center Detent Available



Fxx45-GNN □ □ MC 20/25/30/45/60mm Travel, Dual Gangs, no LED, no Frame, Metal C-type Slide Rod



Fxx45-GNF □ □ MC 20/25/30/45/60mm Travel, Dual Gangs, no LED, with Frame, Metal C-Type Slide Rod



Slide Potentiometer